



## RV Series I Technical Data

### High-pressure radial piston pumps with variable flow rate

#### Highlights:

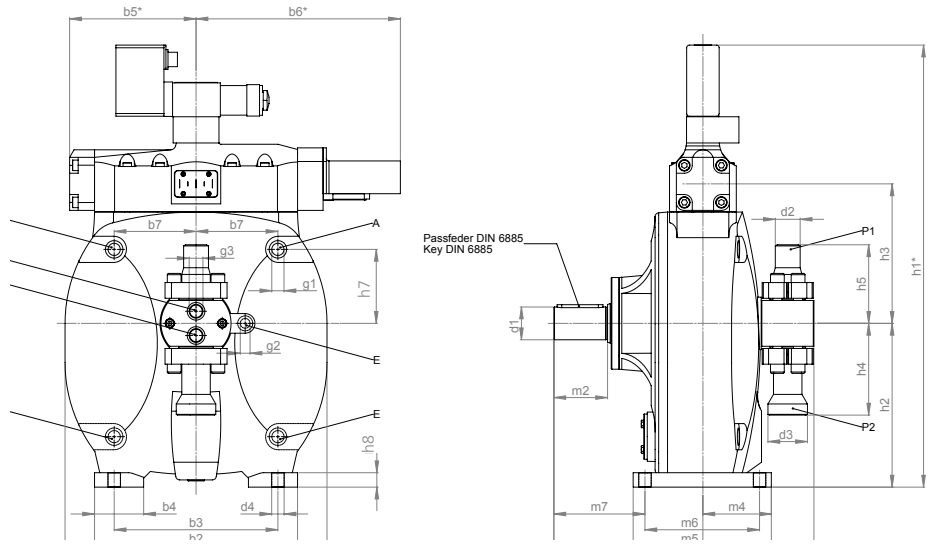
- Based on more than 50 years of experience in building radial piston pumps
- Easily reversible pumping capacity, short regulating times
- Minimal lateral forces on the pistons
- No piston retraction problems as the centrifugal force of the pistons self-activates the power connection between piston, guide shoe and the pivoting lifting ring
- Various regulating possibilities for any requirement
- Low-pulsation pumping
- Excellent noise characteristics

	Type	RV 150.1	RV 150.H	RV 250.1	RV 360.1
Geometric volume	cm <sup>3</sup> /Rev.	97,7	97,7	167,0	242,0
Geometric capacity at n = 1500 min <sup>-1</sup>	l/min	146,0	146,0	250,0	363,0
Continuous Pressure according to DIN 24312	bar	350	420	350	315
Maximum Pressure according to DIN 24312	bar	450	450	450	400
Required oil flow for casing flushing	l/min	8	8	10	14
Minimum control time from 0-100% stroke	ms	45	45	52	55
External leakage at p <sub>a</sub> = 315 bar and 35 cSt	l/min	8,5	8,5	13	18
Speed range for self priming operation (0,9 bar absolute)	min <sup>-1</sup>	500-1500	500-1500	500-1500	500-1000
for pre-filling p <sub>e</sub> = 2 bar	min <sup>-1</sup>	200-1500	200-1500	200-1500	200-1500
Maximum allowable radial load at shaft end (flexible coupling required)	N	500	500	750	1000
Moment of inertia	kgm <sup>2</sup>	0,0676	0,0676	0,164	0,258
Weight	kg	150	150	207	300
Method of fastening		Foot / Flange	Foot / Flange	Flange	Foot / Flange
Inlet pressure		up to continuous pressure			
Pressure liquid		Hydraulic oil HLP according to DIN 51524-2			
Pressure liquid viscosity		20-75 cSt			
Allowable start viscosity at p <sub>e</sub> = 1 bar absolute		150 cSt			
at p <sub>e</sub> = 2 bar absolute		400 cSt			
Pressure liquid temperature		10-65°C			
Purity class according to ISO 4406		19/16/13			
Leakage flow pressure (casing pressure)		max. 2 bar absolute			

# Main dimensions

All dimensions specified in mm.

- P1:** Pressure connection
- P2:** Suction connection
- E:** Inlet for case flushing (optionally)  
(always at the lowest point)
- A:** Outlet for case flushing (optionally)
- M1:** Measuring connection discharge  
(occupied for regulating device 7-9)
- M2:** Measuring connection suction



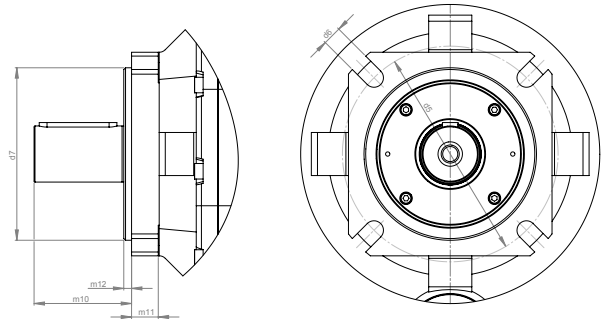
Type	b1	b2	b3	b4	b5	b6	b7	d1	d2	d3	d4	g1	g2	g3
<b>RV 150</b>	400	310	250	75	193	312	125	50	38/29		19	G1/2"	G3/8"	G1/2"
<b>RV 150.H</b>	400	310	250	75	193	312	125	55	48,3/26	48,3/26	19	G1/2"	G3/8"	G1/4"
<b>RV 250</b>	450	-	-	-	208	326	120	63	48,3/30	48,3/30	-	G3/4"	-	G1/4"
<b>RV 360</b>	480	450	360	90	208	326	155	65	45/34	60,5/50	23	G3/4"	G1/2"	G3/8"

Type	h1	h2	h3	h4	h5	h7	h8	m1	m2	m3	m4	m5	m6	m7
<b>RV 150</b>	675	250	213	138,5	118,5	113	22	400	82	227	130	211	175	140
<b>RV 150.H</b>	675	250	213	130	130	113	22	400	82	227	130	211	175	140
<b>RV 250</b>	725	268	243,5	143	143	120	-	502	-	279	173	-	-	-
<b>RV 360</b>	775	305	257,5	159	187,5	120	35	530	105	295	180	290	240	175

RV-EN-170928. Subject to change without notice.

## Flange version:

Type	d5	d6	d7	m10	m11	m12
<b>RV 150</b>	200	18	160 h8	94,5	20	9
<b>RV 250</b>	200	18	160 h8	118	23	9
<b>RV 360</b>	250	22	200 h8	113	31	9



## Application examples

- General hydraulic equipment
- Forging presses
- Bending presses
- Slab shears
- Extruders
- Upsetting presses
- Chip board presses
- Packing presses
- Stripper cranes
- Stretching benches
- Forging manipulators
- Embossing machines
- Pipe test presses
- Pulsation drives
- Pressure transmitters
- Power supplies
- Direct drives for hydraulic cylinders
- And many more applications!

Is your application not mentioned here? Please give us a call. We'll be pleased to advise you!



Open die forging press



**Wepuko PAHNKE GmbH**  
 Max-Planck-Str. 10  
 72555 Metzingen  
 GERMANY

Tel.: +49 7123 1805-0  
 Fax: +49 7123 41231  
 wepuko@wepuko.de  
 www.wepuko.com

